

# Weekly Newsletter

#16

9 January 2026



**NB:** The newsletter is sent from a no-reply email system. If you have a query or question relating to the content of the newsletter(s), please email [office@johnruskin.southwark.sch.uk](mailto:office@johnruskin.southwark.sch.uk)

---

## Dear Parents and Carers

The children have returned from the Christmas break excellently. They have settled back into school routines quickly and have shown a positive attitude to learning. Pupils are engaged, focused, and enthusiastic in lessons, demonstrating good behaviour and a readiness to learn. It has been wonderful to see them working hard, supporting one another, and taking pride in their learning from the very first days back.

This year is the *National Year of Reading*, a project encouraging children, young people, and adults across the country to read widely and often. Its key goals are to increase reading for pleasure, build a stronger reading culture where reading is fun, meaningful and social, support literacy and wellbeing by developing essential skills, and bridge gaps by breaking the link between background and reading achievement. We look forward to joining in and inspiring our pupils to enjoy reading both in school and at home.

**Hamilton Nwokolo**

*Headteacher*

---

## Parents Evenings

Parents Evenings will take place during week commencing Monday 19 January.

---

**Monday 19 January 3.30 – 6.00**      Red Class

---

**Tuesday 20 January 3.40 – 7.00**      Main School

**Tuesday 20 January 3.40 – 7.00**      Purple Class

---

**Wednesday 22 January 3.30 – 6.00**      Lime Class

---



# Weekly Newsletter

#16

9 January 2026



## Applying for Reception Places 2026

The deadline to apply for your child's Reception place for September 2026 is Thursday 15 January 2026 at 11.59pm. You must apply online via the Southwark admissions portal – <https://www.eadmissions.org.uk/>

To view all primary schools in Southwark, please see school's brochure – Southwark Primary Schools 26-27.

If you require any assistance making your application, please see Jemima in the office.

We have one more open event for Reception classes on  
**Wednesday 7 January at 9.30am**

Please be aware that attendance at our nurseries does not guarantee your child a place in Reception.

## After-School Clubs

After-School Clubs begin next week (12th January).

Please note: **All clubs must be paid for prior to your child's attendance.**  
Thank you for your support in making our after-school activities a success!

## Lost Property – Final Reminder



We still have quite a few unclaimed children's coats in our lost property. If your child's coat is missing, please have a look in the middle hall after school when you collect your child.

We plan to donate any unclaimed coats to charity.



## KS2 Healthy Eating Workshops

Georgia from Accent, our school catering company, visited the school yesterday to run engaging workshops for our KS2 pupils. The sessions focused on the importance of eating a variety of different-coloured fruits and vegetables and how each colour helps our bodies in different ways.



The workshops were highly interactive and concluded with pupils making – and enjoying – their own rainbow fruit kebabs.

The children thoroughly enjoyed the experience and learned valuable lessons about healthy eating.



# Weekly Newsletter

#16

9 January 2026



## Special Menu Day

The poster for Accent Superhero Day is set against a blue background with a cityscape of grey buildings. A superhero character in a red suit with a yellow star on the chest and a black cape stands in the center. The text "Accent" is in the top right. Below it, "SUPERHERO DAY!" is written in large, bold, blue letters, with "Special menu day" in a smaller, cursive font underneath. A paragraph of text reads: "Calling all superheroes, it's time to power up! Get ready for bold flavours, heroic helpings, and powerful portions, the kind of lunch every hero dreams of. Fuel up...and save the day!". At the bottom, "THURSDAY 15TH JANUARY" is written in large, bold, blue letters with decorative brackets on either side. The background is decorated with white lightning bolts, stars, and a "WOW!" speech bubble.





## Special Menu Day (continued)

# SUPERHERO DAY!

Special menu day

Team Titan Lamb Tacos  
(G,Mk)

or

Vortex Vegetable and Bean Tacos  
(G,Mk)

~

Codename Carrots

Sonic Sweetcorn

~

Warlock Waffle Fries  
(Mk)

~

Flash Flapjack  
(G)

**LOOK OUT! ALLERGENS**

Ce = Celery	F = Fish	L = Lupin	Mu = Mustard	Se = Sesame Seeds
Cr = Crustaceans	G = Cereals containing Gluten	Mk = Milk	N = Nuts	So = Soya
E = Eggs		Mo = Molluscs	P = Peanuts	Su = Sulphur Dioxide





### National Year of Reading

We are all looking forward to having a seasonal break - time to rest, spend time with friends and family and re-energise for the new year ahead. At JRS, we are also looking forward to **GO ALL IN** with the



## National Year of Reading 2026



**If you're into it,  
read into it**

Our Spring term will start off the Year of Reading with

*Curiosity: what's your question?*

- our theme for our combined Science Week and World Book Day, in March!  
What would you like to find out more about? If you're into it, READ into it!!  
Click the link to find ideas for you to share, engage and support your child's reading journey over the holidays and in the year ahead:

<https://goallin.org.uk/get-involved/families/>



Do you have half an hour that you could **VOLUNTEER** to help **INSPIRE** the next generation of readers? We are always looking for individuals who can make a difference by reading with children in a supported and friendly atmosphere - *Please contact the office, if you would like to find out more!*



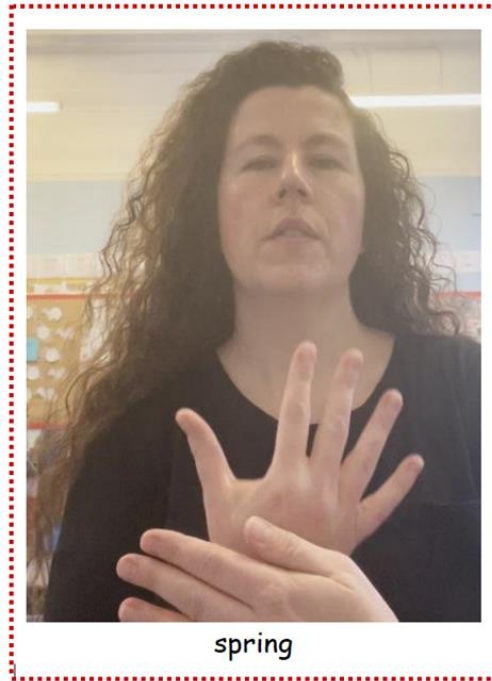
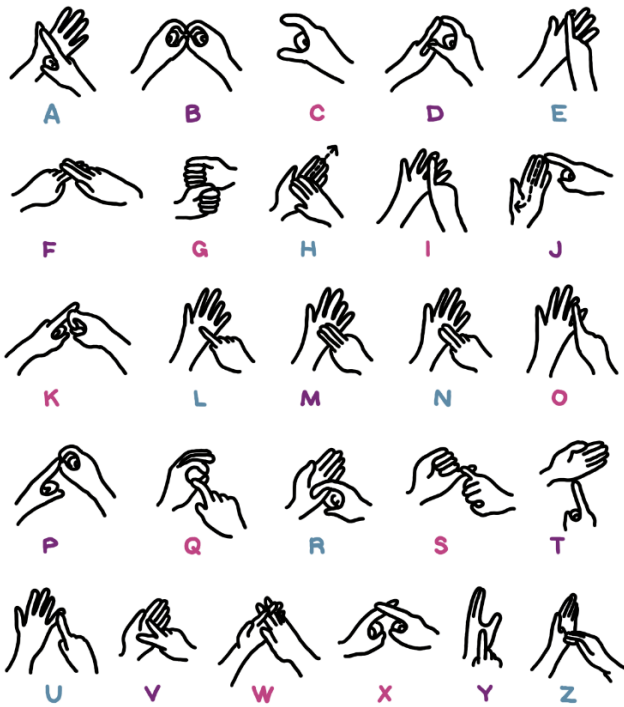
# Weekly Newsletter

#16

9 January 2026



## British Sign Language



Signs of the Week

## Non-Urgent Healthcare

**Parent or carer**

You can text a school nurse on

**07520 631 130**

### About ParentLine

ParentLine and ChatHealth are supported by the Children and Young People's Health Partnership which brings together organisations and families in Lambeth and Southwark to improve everyday healthcare for local children and young people.

### Confidentiality

We might inform someone if we are concerned about the safety of you, your child or someone else but we would usually speak to you first. Your messages are stored and can be seen by other healthcare staff who follow the same confidentiality rules.

**ParentLine Number**

Text: 07520 631 130

We are here during school holidays too!

The ParentLine number is a text number only. It cannot receive phone calls.

This number is confidential and is for use by parents and carers of children and young people in Lambeth and Southwark.

A text message service is also available for young people. [find out more about ChatHealth](#).

If you need some non-urgent healthcare advice about your child, one way to get this is through the **ParentLine** text number.



# Weekly Newsletter

#16

9 January 2026



## Academy Tour

Harris Academy  
Peckham

# Tour our Academy.

## See Harris Academy Peckham in action!

### Thursday 12<sup>th</sup> February at 9:10am

Email: [admissions@harrispeckham.org.uk](mailto:admissions@harrispeckham.org.uk)  
to confirm your attendance

We look forward to welcoming you

Harris Academy Peckham,  
112 Peckham Road,  
London, SE15 5DZ

Ofsted  
Outstanding  
Provider

A promotional poster for Harris Academy Peckham. The background is dark blue with wavy orange and yellow lines. The Harris Academy Peckham logo is in the top left. The main text is centered and reads 'Tour our Academy. See Harris Academy Peckham in action! Thursday 12th February at 9:10am'. Below this is the email address 'admissions@harrispeckham.org.uk' and the text 'We look forward to welcoming you'. The address 'Harris Academy Peckham, 112 Peckham Road, London, SE15 5DZ' is at the bottom. The Ofsted Outstanding Provider logo is in the bottom right corner.







## Free Mental Health Support (continued)

The infographic features a background of rolling orange hills under a blue sky with white clouds and a smiling yellow sun. It is divided into four quadrants, each with a yellow circular icon and a title. The bottom section contains a QR code, a call to action, and support hours.

- Chat with a professional**  
Our friendly team of professionals provide anonymous support through live, online chat. Chat through whatever is on your mind there's nothing too big or small.
- Read self-help articles**  
Helpful articles, personal experiences and tips from both the community and our professional team.
- Try a wellbeing activity**  
Set personal goals, write in your journal, or try a wellbeing activity from our mini-activity hub.

 **scan me to get started**  
or visit [kooth.com](https://www.kooth.com)

Professional support from 12pm - 10pm (weekdays) and 6pm - 10pm weekends. Everything else is 24/7.

\*This means we've met all the standards of the British Association of Counselling and Psychotherapists. We're an accredited service, and our practitioners are either BACP accredited or working towards it. You're in safe hands.





## Autism Support Team



AutismSupportTeam@  
Southwark.gov.uk

### AUTISM SUPPORT TEAM TOILET TRAINING FOR PARENT/CARER ONLY

#### HOW TO SUPPORT YOUR AUTISTIC CHILD TO DEVELOP TOILETING SKILLS

In partnership with the Autism Education Trust (AET) we are offering Developing Toileting Skills Training for Parent + Carers of autistic children.

#### Aims:

- To develop knowledge of how to support autistic children to achieve toileting independence.
- To understand the importance of working with others to support autistic children to develop independent toileting skills

#### Learning objectives:

- Understand how autism can impact on children developing independent toileting skills.
- Understand the importance of all adults working together to support the development of independent toileting skills.
- Consider how to remove barriers to developing toileting skills and how to make reasonable adjustments to support further toileting independence.

#### Free Training Online Dates:

- 21<sup>st</sup> October 9.45 – 11.45 2025
- 15<sup>th</sup> December 2025 12.30 – 2.30 2025
- 9<sup>th</sup> February 9.45 – 11.45 2026
- 23<sup>rd</sup> March 12.30 – 2.30 2026
- 18<sup>th</sup> May 9.45 – 11.45 2026
- 23<sup>rd</sup> July 12.30 – 2.30 2026
- 6<sup>th</sup> August 9.45 – 11.45 2026
- 13<sup>th</sup> August 12.30 – 2.30 2026

Register [here](#)

Online Microsoft Teams Training Link will be sent to your email 2 days prior to start date of training.



### Community Services and Activities



# SPRING COMMUNITY HUB



**COFFEE MORNING**  
10am-12noon every 1st Monday of the month



**CAMBERWELL CONNECT**  
Group for over 55s - every Wednesday 11am-1pm



**FOOD BANK**  
Emergency food parcels for those in need



**SOCIAL SUPERMARKET**  
Discounted food for those on low or no income

### OUR OTHER SERVICES

- ♥ HOLIDAY & AFTER SCHOOL ACTIVITY CAMPS FOR CHILDREN
- ♥ ADVICE, GUIDANCE & ADVOCACY SERVICES AND SUPPORT
- ♥ CLOTHES BANK ♥ SPRING UP WOMEN ♥ VOLUNTEER OPPORTUNITIES\*

\* Email us at [volunteering@springcommunityhub.org.uk](mailto:volunteering@springcommunityhub.org.uk) or phone our office for more information

[www.springcommunityhub.org.uk](http://www.springcommunityhub.org.uk)

♥ Tel: 07901 617189 ♥ Email: [office@springcommunityhub.org.uk](mailto:office@springcommunityhub.org.uk)





# Weekly Newsletter

#16

9 January 2026



## Southwark Children & Family Hubs

# Stay & Play



**1st Place Best Start Family Hub**  
12 Chumleigh Street  
Burgess Park  
SE5 0RN

Scan for directions



020 7740 8070

bbwcf@1stplace.uk.com

@1stPlaceCentre

**1stplace.uk.com**

**Victory Best Start Family Hub**  
Elba Place  
SE17 1PT

Scan for directions



Click on the following link for more information: [Spring+Timetable+Stay+&+Play+2026.pdf](#)



# Weekly Newsletter

## #16

9 January 2026



### Key Events for Week Commencing 12 January

Monday  
2.00-2.30 **Burgundy Class swimming**

Tuesday  
10.00-10.30 **Turquoise Class swimming**  
10.30-11.00 **Scarlet Class swimming**

Wednesday  
9.30 **Reception Open Day**

### Forthcoming Dates

30 January **Year 5 trip to Science Museum**

24 February **Orange Class trip to Brockwell Park**

2 March **Green Class trip to Brockwell Park**

9 -13 March **Year 5 School Journey**

### Spring Term Dates 2026

*INSET day: Monday 5 January  
(school closed to pupils)*

**Tuesday 6 January -- Friday 13 February**

Half Term Holiday: Monday 16 February -- Friday 20 February

**Monday 23 February -- Friday 27 March  
(school closes at 2pm)**



# Weekly Newsletter

#16

9 January 2026



## Southwark Council Bulletin

Read here: [Latest News](#)



## Useful Links

School term dates 25-26 - [Term Dates 2025-26](#)

Our website – [www.johnruskin.southwark.sch.uk](http://www.johnruskin.southwark.sch.uk)

School caterer - <https://accentcatering.co.uk/>

Uniform supplier – [www.earthuniform.com/collections/john-ruskin-primary-school](http://www.earthuniform.com/collections/john-ruskin-primary-school)

Secondhand uniform supplier – [uniformerly.co.uk/search-listings/?q=&c=17273](http://uniformerly.co.uk/search-listings/?q=&c=17273)

School policies, including the school's safeguarding policy –

<https://johnruskin.southwark.sch.uk/parents-information/policies/>

The Nest - [thenestsouthwark.org.uk](http://thenestsouthwark.org.uk)

Chess in Schools - [www.chessinschools.co.uk](http://www.chessinschools.co.uk)

Southwark Council – [www.southwark.gov.uk](http://www.southwark.gov.uk)

Camberwell Leisure Centre - [southwarkleisure.co.uk/centres/camberwell-leisure-centre](http://southwarkleisure.co.uk/centres/camberwell-leisure-centre)

Parentkind - [www.parentkind.org.uk](http://www.parentkind.org.uk)

Children's Commissioner - [www.childrenscommissioner.gov.uk](http://www.childrenscommissioner.gov.uk)

Department for Education - [www.gov.uk/government/organisations/department-for-education](http://www.gov.uk/government/organisations/department-for-education)

Ofsted - [www.gov.uk/government/organisations/ofsted](http://www.gov.uk/government/organisations/ofsted)

NHS - [www.nhs.uk](http://www.nhs.uk)

TFL - [travelforlife.tfl.gov.uk](http://travelforlife.tfl.gov.uk)

