

Weekly Newsletter

#33

6 June 2025

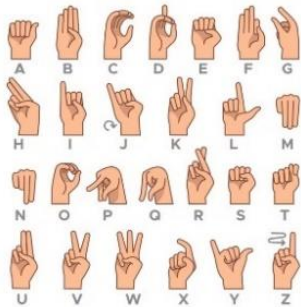


NB: The newsletter is sent from a no-reply email system. If you have a query or question relating to the content of the newsletter(s), please email office@johnruskin.southwark.sch.uk

Hello to Jon Rhoden

Jon Rhoden is our new school business manager. I'm sure you will all join me in wishing him a very warm welcome to our school.

Sign of the Week



[Link to signing video](#)

This week's sign is Autumn

Key Events for Week Commencing 9 June 2025

Monday

All day

2.00

Year 3 out to Brockwell Community Gardens

Burgundy Class swimming

Tuesday

10.00-10.30

10.30-11.00

Turquoise Class swimming

Scarlet Class swimming

Wednesday

All day

9.20 & 10:35

Orange Class out to Florence Nightingale Museum

Turquoise Class assembly

Thursday

All day

Green Class out to Florence Nightingale Museum

Friday

2.00

Vermilion Class swimming



Weekly Newsletter

#33

6 June 2025



Super Salad Sale!



20p a bag

(or what you think it is worth!)

Reception have been hard at work in our garden and we have lots and lots of lettuce ready to eat! We've tried it and it's delicious. We will be selling our lettuce on Monday after school in the small playground by our reception gate. Once it's gone, it's gone! Cash only please/no cards!

Please support us and get 1 of your 5 a day!

PRICE MATCH!



£1



69p



JRS Salad 20p!



Weekly Newsletter

#33

6 June 2025



Southwark Council Bulletin

Read here: [Latest news](#)



Useful Links

School term dates 25-26 - [Term Dates 2025-26](#)

Our website – www.johnruskin.southwark.sch.uk

School caterer - www.harrisoncatering.co.uk

Uniform supplier – www.earthuniform.com/collections/john-ruskin-primary-school

Secondhand uniform supplier – uniformerly.co.uk/search-listings/?q=&c=17273

The Nest - thenestsouthwark.org.uk

Chess in Schools - www.chessinschools.co.uk

Southwark Council – www.southwark.gov.uk

Camberwell Leisure Centre - southwarkleisure.co.uk/centres/camberwell-leisure-centre

Parentkind - www.parentkind.org.uk

Children's Commissioner - www.childrenscommissioner.gov.uk

Department for Education - www.gov.uk/government/organisations/departments-for-education

Ofsted - www.gov.uk/government/organisations/ofsted

NHS - www.nhs.uk

TFL - travelforlife.tfl.gov.uk

