

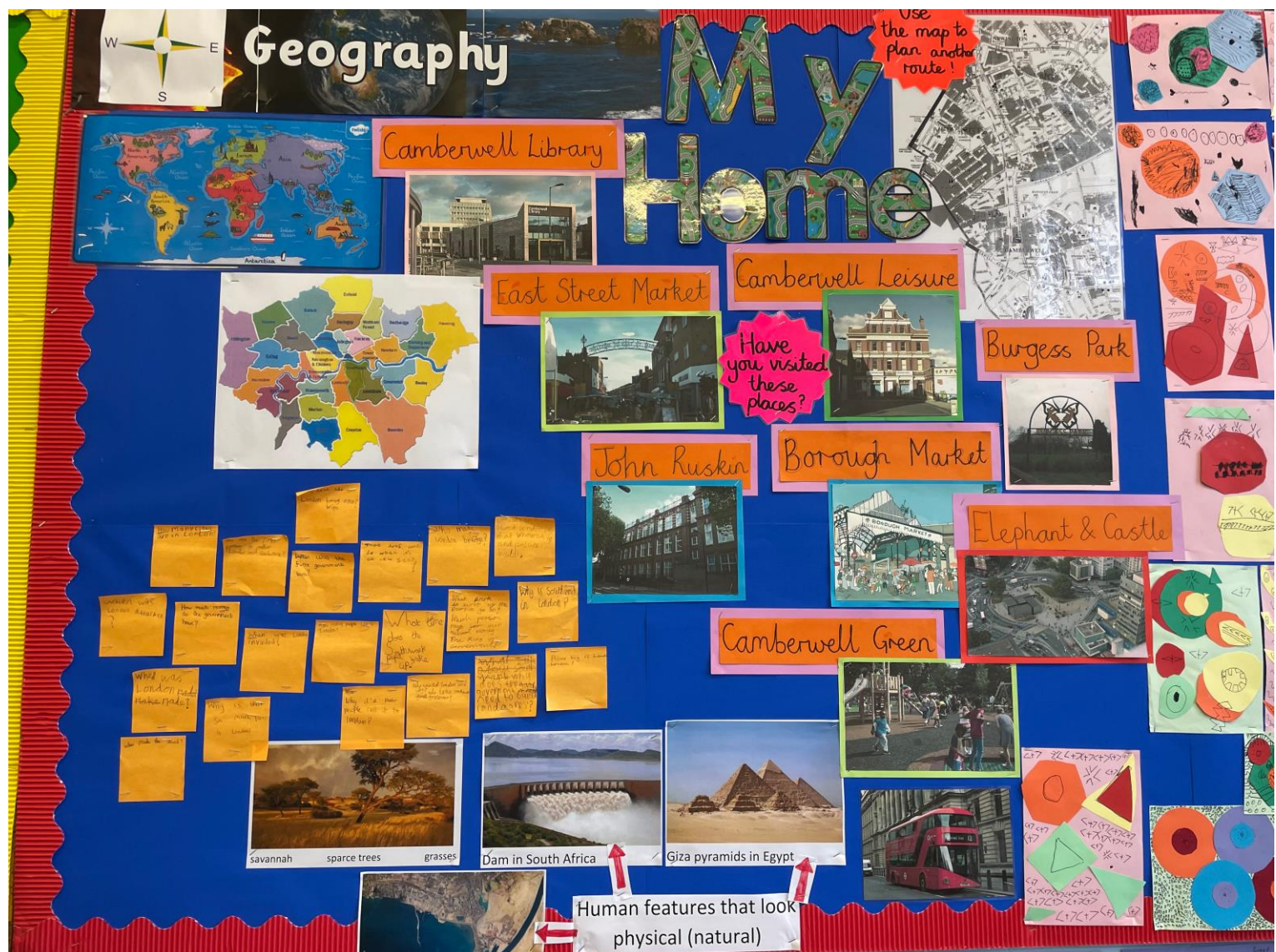


Weekly Newsletter # 22 – 1 March 2024

Curriculum in Action - Geography

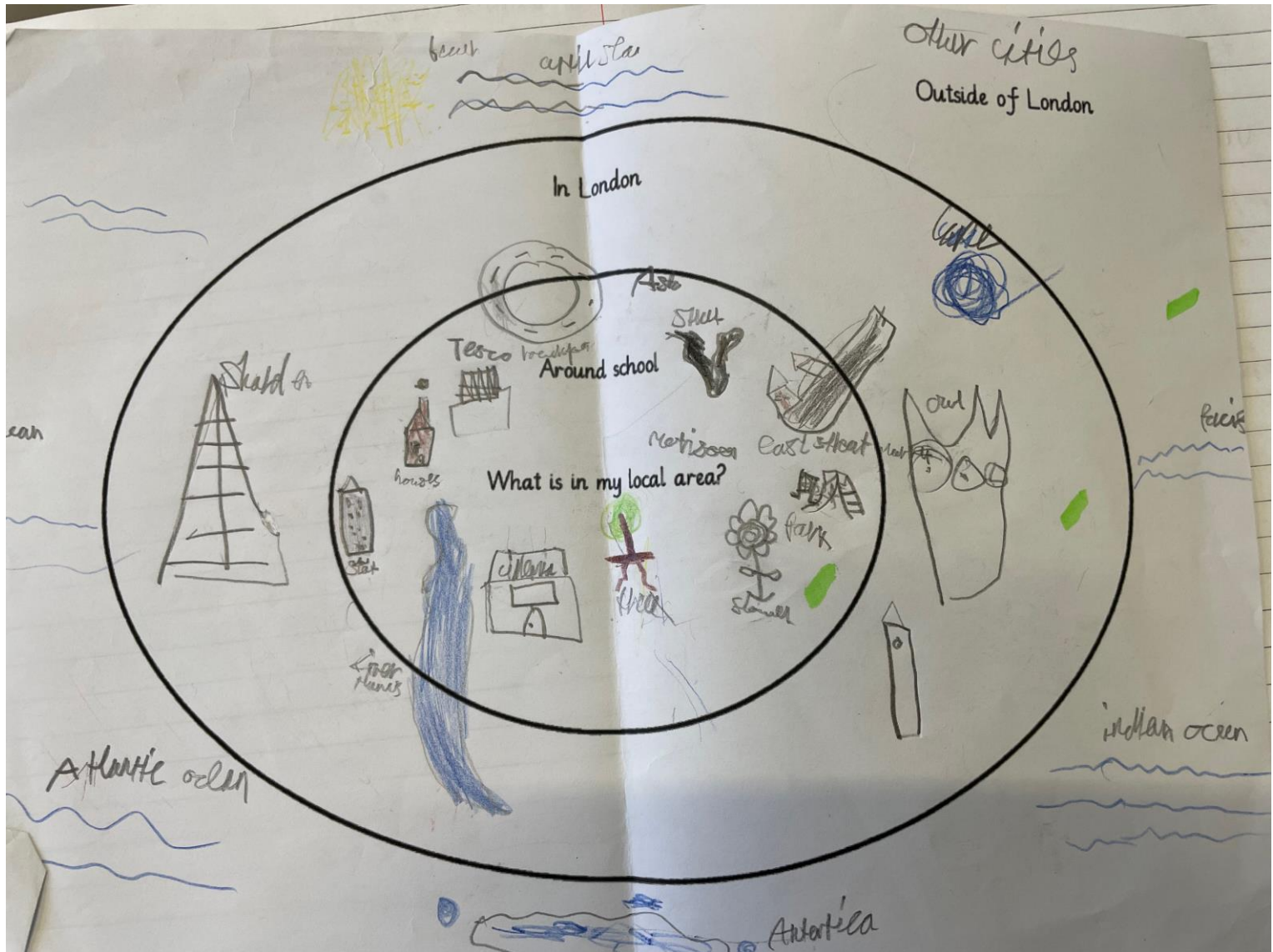
There has been a range of geographical learning in KS2 this year.

Year 3 have been learning about our local area: Southwark



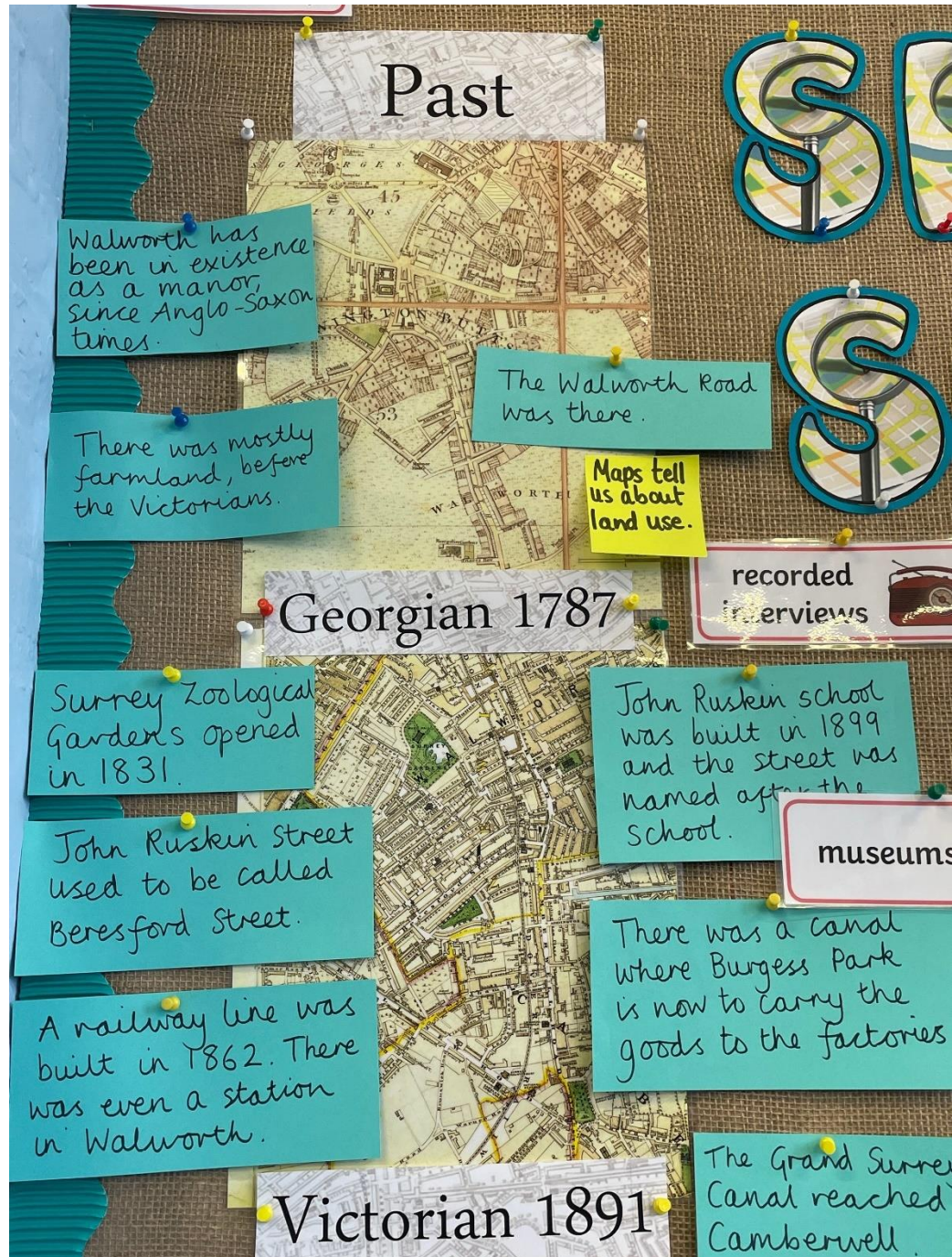


Children had to identify features found around our school (local area), in London and outside London.



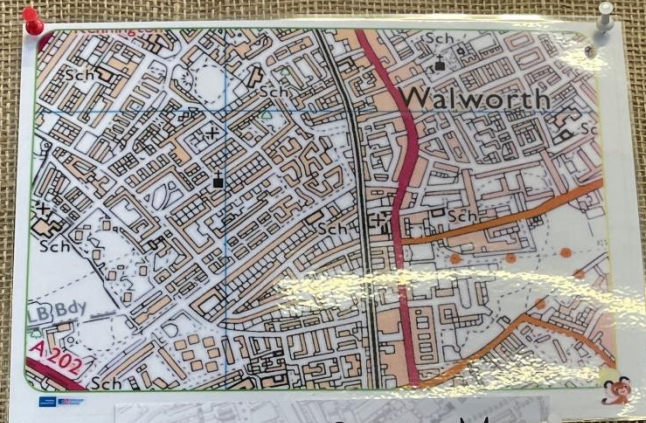


Year 4 have also been looking at our local area: the past, now and during 'Our Future Areas' workshop, children created plans for the future of Southwark.

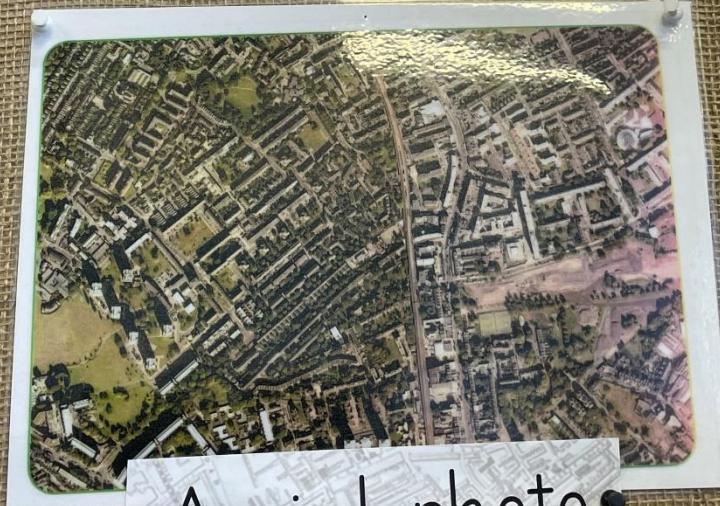




Present



Ordinance Survey Map



Aerial photo



JOHN RUSKIN
PRIMARY SCHOOL

John Ruskin Primary School and Language Classes

John Ruskin Street | Camberwell | London | SE5 0PQ

Tel: [0207 7035800](tel:02077035800) | E: office@johnruskin.southwark.sch.uk

W: www.johnruskin.southwark.sch.uk

Headteacher: Miss C Tayton



Wednesday 21st February
WALT describe the positive and negative impact by humans on the local area.



We had a workshop on our likes and dislikes about our local area called Streets for People. We thought about what we can see in our local area, how the space makes us feel and our wishes for the future to improve our community. We made bunting about our wishes for the future.



We hope that the council will listen to some of our wishes.

My wish was to stop rubbish and pollution!





Year 5 have been using our online mapping tool 'Digimaps' in their first lesson of their new topic 'Brazil' to learn more about human and physical features of the country.

Monday 26th February
What are the main geographical features of Brazil?

1. Which ocean does Brazil face? (Hint – it is to the east of Brazil)

Using Key, answer the following:

2. What is the capital of Brazil?
3. What does the purple line represent?
4. What city (First order admin capital) has an airport closest to the "Mouths of the Amazon" (where the amazon begins from the sea)?

Using Overlays, answer the following:

5. Are there any volcanoes in Brazil?
6. What are the three main biomes in Brazil?
7. Where is the most populated place in Brazil?
8. Does the equator go through Brazil?

Challenge: describe the similarities and differences between this area, our own locality and other places you have studied

For example:

Brazil is different to England because...
Brazil is different to Antarctica because...
Brazil is similar to England because...


1. The ocean Brazil faces is the Atlantic Ocean. ✓
2. The capital of Brazil is Brazilia. ✓
3. The purple line represents the international boundary. ✓
4. The city that has an airport next to it is Belém. ✓
5. There are no volcanoes in Brazil. ✓
6. The biomes are Moist Broadleaf forest, Dry Grasslands, Savanas, Shrublands and Deserts and Xeric Shrublands. ✓
7. The most popular place in Brazil is São Guarulhos Paulo. ✓
8. The equator does go through Brazil. ✓

Brazil is different to England because Brazil has more forests. ✓
Brazil is different to Antarctica because Antarctica is colder. ✓
Brazil is similar to England because they both have heatwaves. ✓



Last term, Year 6 learnt some of the more technical aspects of geography such as climate zones and biomes.

Wednesday 1st November
WAT: explain the different climate zones in the world.



What is the difference between weather and climate?

Weather describes the day-to-day conditions of the atmosphere.
Weather can change quickly - one day it can be dry ^{and sunny} and the next day it may rain.

Climate describes average weather conditions over longer periods and over large areas.

Temperate	Cold winters and mild summers. ✓
Mountains	Mountains is very cold all year. ✓
Polar	Polar is very cold ^{and dry} all year. ✓
Tropical	Tropical is hot and wet most of the year. ✓
Mediterranean	Mild winters and dry, hot summers ✓
Desert (Arid)	Dry all year. Some are really hot all year, and some have really cold winters. ✓





Tuesday 7th November

WAT: explain the features of three biomes.

Biomes are regions with similar climate, animals and plants.

Tropical rainforest

~~In the tropic~~ Climate - In the tropical rainforest, their climate is tropical which means hot and sunny all year. Some days, it can reach to 30°C.

Plants - There are thousands of species of trees in the tropical rainforest. Some trees grow up to 80m tall. They keep their leaves all year.

Animals - The animals in the tropical rainforest include: orangutans, poison dart frogs, birds of paradise and tarantulas. ✓

Deciduous rainforest

Climate - The climate of the deciduous rainforest is temperate which is cold winters and mild summers but in some countries, the summers are getting hotter and hotter.

Plants - Deciduous plants are plants that lose their leaves in ^{winter} ~~autumn~~ unlike evergreen trees. Their leaves turn a different colour (mostly red, orange, yellow and brown) in autumn.

Animals - The animals in the deciduous rainforest include - rabbits, foxes, raccoons, ladybugs and bees. ✓

Coniferous forest

Climate - Coniferous forest climate is polar and temperate which is a mix of really cold and quite hot ~~summer~~ summers.

Plants - Coniferous forest plants are cones, pine trees, larch and hemlocks. They come in all shapes and sizes.

Animals - The animals in the coniferous forest include - bald eagle, bobcat and red fox. ✓

Tropical - Asia Coniferous - ~~Canada~~ Canada Deciduous - UK

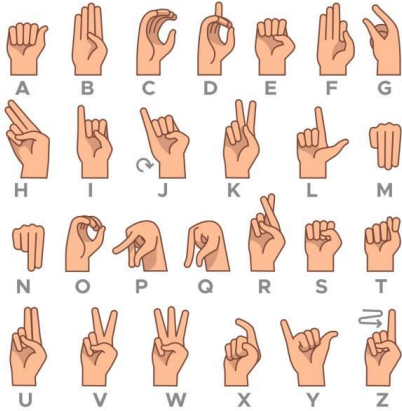




Sign of the Week

This week's sign of the week is 'like' and 'don't like'

[Sign of the Week](#)

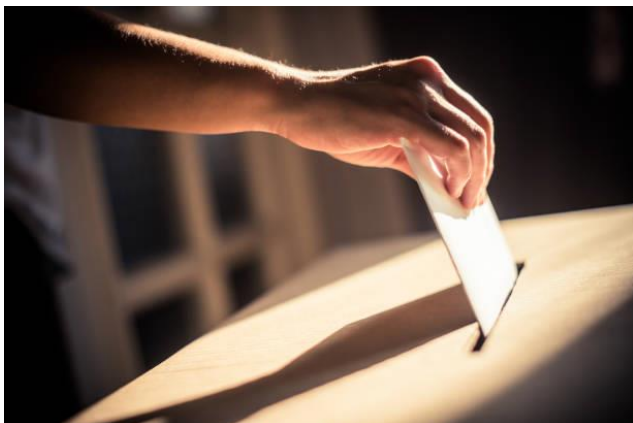


Parent Governor Election

We have one Parent governor vacancy which we need to fill as soon as possible. John Ruskin Primary School and Language Classes has always aimed for a partnership with parents which undoubtedly brings great benefits to the children. One of the most significant ways you can help in promoting this aim is to volunteer to be a Parent Governor.

Please see the information via the link - [Parent Governor Information 2024](#)

If you are interested in becoming a Parent Governor you need to complete the Nomination Form contained in the information link above. If you cannot access the Nomination Form, you can collect a hard copy version from the office before the deadline of 8 March.



John Ruskin Primary School and Language Classes
John Ruskin Street | Camberwell | London | SE5 0PQ
Tel: [0207 7035800](tel:02077035800) | E: office@johnruskin.southwark.sch.uk
W: www.johnruskin.southwark.sch.uk
Headteacher: Miss C Tayton

John Ruskin Primary School & Language Classes

We are an Ofsted Outstanding School

Outstanding results in all Key Stages Nursery
to Year 6

www.johnruskin.southwark.sch.uk

Ofsted
Outstanding
Provider



New Service for Parents in Southwark

Information about a charity called Contact who support families with a disabled child.



DO YOU NEED HELP TO CLAIM DISABILITY LIVING ALLOWANCE?

**Disability Living Allowance (DLA) is the main benefit for
disabled children under the age of 16**

Parents describe this extra help as 'life changing'

If you are making a **new claim** for DLA, our trained Benefiting You volunteers
can help you complete the entire form

**Easily book an appointment online | Delivered by zoom
Help to fill in the form, and more!**

Book an appointment at contact.org.uk/benefiting-you

For more information please contact benefitingyou@contact.org.uk

This service covers London boroughs Southwark and Brent. It is only for new DLA applications

contact For families
with disabled children

Contact is a trading name of Contact a Family. Charity registered in England and Wales (284912) and Scotland (SC039169).



JOHN RUSKIN
PRIMARY SCHOOL

John Ruskin Primary School and Language Classes

John Ruskin Street | Camberwell | London | SE5 0PQ

Tel: [0207 7035800](tel:02077035800) | **E:** office@johnruskin.southwark.sch.uk

W: www.johnruskin.southwark.sch.uk

Headteacher: Miss C Tayton

John Ruskin Primary School & Language Classes

We are an Ofsted Outstanding School

Outstanding results in all Key Stages Nursery
to Year 6

www.johnruskin.southwark.sch.uk

Ofsted
Outstanding
Provider



Parentskills2go Workshops

Parent workshops at the Lewington Centre



Join us for

FITNESS AND WELLNESS

For Women

- BREATHING
- STRETCHING
- DANCING
- YOGA TECHNIQUES
- AND MORE...

 Lewington Community Centre,
9 Eugenia Road.
SE16 2RU

For more information
 07725818283, 07507443737
 admin@parentskills2go.com
 www.parentskills2go.org

Connect With Us:
 FB: @parentskills2go
 IG: @parentskills2go_

Every Tuesday
10:30am - 11:30am

Creche will be provided

Proudly sponsored by:





JOHN RUSKIN
PRIMARY SCHOOL

John Ruskin Primary School and Language Classes
John Ruskin Street | Camberwell | London | SE5 0PQ
Tel: [0207 7035800](tel:02077035800) | E: office@johnruskin.southwark.sch.uk
W: www.johnruskin.southwark.sch.uk
Headteacher: Miss C Tayton

John Ruskin Primary School & Language Classes

We are an Ofsted Outstanding School

Outstanding results in all Key Stages Nursery
to Year 6

www.johnruskin.southwark.sch.uk


Ofsted
Outstanding
Provider



Parent Skills 2Go
Community Interest Company

IN
CONJUNCTION
WITH

HOPE & SALVATION
Doing a little things with great love



**My Child & Me
@ Parent's Space**

SUPPORTING MENTAL HEALTH
& WELLBEING OF MARGINALISED
FAMILIES AND CHILDREN WITH SPECIAL
EDUCATIONAL NEEDS

**UPCOMING
COFFEE MORNING &
WORKSHOP**

WEDNESDAY, 06 MARCH 2024

BEHAVIOUR MANAGEMENT | SLEEP FOR SEND

TIME: 9:30 AM - 12:00 PM

ATTENDANCE

ONLINE / **IN-PERSON: THE LEWINGTON CENTRE, 9 EUGENIA ROAD ROTHERHITHE, SE16 2RU**

Creche & Refreshments will be provided



For Registration

Scan QR code
to be redirected
to Eventbrite



Connect via zoom

<http://us02web.zoom.us/j/88959891194?wd=dE5sdWlPdZNzbWVwWlEVeZJNUzBVUT09>

For more information:

admin@parentskills2go.com | barbarakombe@gmail.com | Phone: 02035369609, 07394662602

SUPPORTED BY
MAYOR OF LONDON

Thrive LDN
towards happier, healthier lives

Thrive LDN was funded by the GLA

Impact
on **Urban
Health**



JOHN RUSKIN
PRIMARY SCHOOL

John Ruskin Primary School and Language Classes
John Ruskin Street | Camberwell | London | SE5 0PQ
Tel: [0207 7035800](tel:02077035800) | E: office@johnruskin.southwark.sch.uk
W: www.johnruskin.southwark.sch.uk
Headteacher: Miss C Tayton



MON£Y MATTERS

Warm Hub Project

SURVIVING OR THRIVING IN HARD TIMES

- What does the cost of living crisis mean to you?
- What about no recourse to public funds?
- How to have a positive impact on children with money.
- Impact of debt on mental health.

PART 4

Date Thurs, 29th Feb -
Thurs, 21st Mar 2024

Time 10am - 12pm

Lewington Community Centre, 9 Eugenia Road. SE16 2RU

07394662602, 02035369609
 admin@parentskills2go.com
 www.parentskills2go.org

Proudly sponsored by:

Connect with us: @parentskills2go @parentskills2go_

Impact on Urban Health



JOHN RUSKIN
PRIMARY SCHOOL

John Ruskin Primary School and Language Classes
John Ruskin Street | Camberwell | London | SE5 0PQ
Tel: [0207 7035800](tel:02077035800) | E: office@johnruskin.southwark.sch.uk
W: www.johnruskin.southwark.sch.uk
Headteacher: Miss C Tayton

John Ruskin Primary School & Language Classes

We are an Ofsted Outstanding School

Outstanding results in all Key Stages Nursery
to Year 6

www.johnruskin.southwark.sch.uk

Ofsted
Outstanding
Provider



Harris Academy Football

Harris have added more sessions to their weekly coaching program meaning more opportunities for young players.

FOOTBALL DEVELOPMENT COURSE AT HARRIS ACADEMY BERMONDSEY



55 SOUTHWARK PARK ROAD, SE16 3TZ

Starting Saturday 9th March

Group 1 - School Reception & Year 1 Children - **9am – 10am**

Group 2 - School Years 2 & 3 Children - **10am – 11.30am**

Group 3 - School Years 4, 5 & 6 Children - **11.30am – 1.00pm**

Group 4 - School Reception & Year 1 Children - **1pm – 2pm**

Dear Parents, we are pleased to announce the dates for our Weekly Football Development Course Held on Saturdays at Harris Academy Bermondsey.

- The Course is taught by our Team of F.A and UEFA Qualified Professional Coaches who are all DBS Certified and First Aid Trained.
- Children are Fully supervised in small coaching groups.
- Each Session is based on a core element of Football, i.e. Close Ball Control, Passing, Dribbling, Shooting, etc.
- Sessions are held on the 3G Pitch therefore children can wear Football Boots or Trainers.
- Regular Weekly Sessions to build Confidence and Core Skills in a safe, controlled and **Fun Environment with Monthly Competitions where Medals and Awards can be Won**
- We pride ourselves on small, concentrated coaching groups to ensure all children are engaged at all times therefore spaces are limited and allocated on a first come first served basis.

Price - We Run Sessions 45 Saturdays per Year and Payment is Collected Monthly
Trial Sessions Available on Request

For Children in Reception & Year 1 - £37 per Calendar Month

Children in Years 2 through 6 - £48.50 per Calendar Month

To Book Your Child's Place Text/Whatsapp:
'HAB + Your Child's Name + Group + Your Email Address'
To **07398442907** or Call **0121 221 2261**

Easter Football Fun Camp Spaces Available

Week 1 - Tuesday 2nd – Friday 5th April And/Or, **Week 2** - Monday 8th – Friday 12th April
9am – 3pm – Daily Competitions, Fun Games and Matches

To find out more: Text/Whatsapp: HAB EASTER to 07398442907 or Call 0121 221 2261



JOHN RUSKIN
PRIMARY SCHOOL

John Ruskin Primary School and Language Classes
John Ruskin Street | Camberwell | London | SE5 0PQ
Tel: **0207 7035800** | E: **office@johnruskin.southwark.sch.uk**
W: **www.johnruskin.southwark.sch.uk**
Headteacher: Miss C Tayton

John Ruskin Primary School & Language Classes

We are an Ofsted Outstanding School

Outstanding results in all Key Stages Nursery
to Year 6

www.johnruskin.southwark.sch.uk

Ofsted
Outstanding
Provider



Dates for week commencing 4 March

Monday 4 March

All day **Year 5 trip to the *British Museum***
2.00 **Burgundy swimming**

Tuesday 5 March

10.00-10.30 **Turquoise Class swimming**
10.30-11.00 **Scarlet Class swimming**

Wednesday 6 March

Am **Year 4 Cricket**

Thursday 7 March

All day **World Book Day**
3.45 **School Journey parent meeting – Bottom Hall**

Friday 8 March

Am **Author visit for EYFS & KS1**
2.00 **Vermilion swimming**

Forthcoming Dates

Tuesday 12 March

Reception dental checks

Monday 18 to Friday 22 March

Year 5 School Journey to *Kingswood*

Friday 22 March

Purple Class trip to British Museum

Tuesday 26 March

Y5 trip to Science Museum

Tuesday 16 April

Y4 trip to National Gallery

Wednesday 17 April

Y1 trip to Postal Museum – trip costs £6



John Ruskin Primary School and Language Classes
John Ruskin Street | Camberwell | London | SE5 0PQ
Tel: [0207 7035800](tel:02077035800) | E: office@johnruskin.southwark.sch.uk
W: www.johnruskin.southwark.sch.uk
Headteacher: Miss C Tayton